



## People to People International — Delaware Chapter

Jean Raleigh  
*Co-president*

Georgi Marquisee  
*Co-president*

Edward Tucker  
*Immediate Past President*

Rebecca Faber  
*Secretary*

Aref Aref  
*Treasurer*

Henry Beckler  
*Finance*

Beatriz Vicente  
*Hosting*

Bahareh Z. vanBoekhold  
*Membership*

Lorraine Przywara  
*Home Stays*

Anna White  
*Programs*

William Lindsey  
*Publicity*

Carl Hutter  
*Student Ambassador*

Joost vanBoekhold  
*Website*

### *Directors*

Odette Aref  
Floyd Ho

Hugh J Kelly

Patrick Kelly

Saleem Khan

Peter Martinez

Erastus Mong are

John A Pastor

Carla Stone

Victo Udo

Edward Raleigh

## On Track



During the 2007/2008 year, the Delaware Chapter sponsored programs and hosting activities focused on countries that included Argentina, Jordan, Syria, Morocco, Egypt, Romania, China, India, Israel, India, France, Mexico, Kenya, and others. Our programs ranged from discussion groups for just a few people to audiences of up to 500 people that included a large spectrum of ages and backgrounds.

We partner with the Girl Scouts, Boys and Girls Clubs and the Diversity Club of the Delaware Technical College, Widener Law School, Winterthur, the University of Delaware, the Unitarian Church, Archmere Academy, and other local groups. Three musical events helped raise awareness of our Chapter locally. Over 1200 people attended our events during this exciting year!

All facets of the Chapter's activities were active, thanks to the chairs and committee supporters who made considerable efforts to grow our chapter's attendance and participation in programs, hostings and events. Our action plan continues to help us focus on ways to measure our progress to grow attendance and in turn, membership. Our new bylaws provide direction and flexibility in pursuit of our mission of "Peace through Understanding."

Support from the community is evidenced by the diverse people who chose to come to our exciting programs and the generous support from our Pacesetters. These factors allowed our finances to remain stable. PTPDE receives assistance from the State of Delaware Grant In Aid program, which enables us to offer most programs free of charge.

Continued progress was made in the way in which the chapter conducts its affairs and communications. This year our Board of Directors initiated informal action workshops that alternated with formal board meetings. The PTPDE website and newsletter, coupled with attractive email alerts, bring news and information to our members and the community at large. PTPDE was featured in a two-page article in the local News-Journal and members were interviewed on radio and TV.

# Activities & Programs

The Families of the World programs include videos on a selected country with foods, entertainment and crafts to help introduce area children to the world beyond the USA. The Chapter donates the program costs.



*Scouts model hat bands they made for their sombreros.*



*Citlalli de Mexico performed and taught at PTPDE Families of Mexico program for Girl Scouts.*



*Indian dancers perform at PTPDE Families of India program for Girl Scouts.*

**Delaware** has the highest participation rate in the nation for the Student Ambassador travel program. The Chapter gave scholarships of \$2000 (matched by PTP International) and \$1000 to two outstanding area students to help them participate in the program.

**Town Meeting** presentations by US State Department speakers continue to be popular. Speakers often give talks at local high schools and Widener Law School as part of their Delaware itineraries.



*Fullbright Scholars from Argentina at a PTPDE reception for them at Winterthur.*



*Robert L. Dance giving speech*



*Dancers from the Philippines & China performed at a multicultural program at Cokesbury Village.*



**Attendance and participation** in PTPDE programs and events continue to grow. We always need energetic people to help.... Please join us! (See our website for membership information)

**Books for Overseas Youth** is a new humanitarian effort to provide books to students whose schools need more English reading materials. The Honors Club at the Cab Callaway School of the Arts collected books that were sent to a school in Morocco!

**More than a quarter of our members** give beyond their membership dues which allows our finances to remain stable and enables us to offer most programs free of charge.

**This year**, we awarded our third People Helping People Award to Dr. John M. Levinson, who for many years has served the sick and helpless in his personal efforts in the Third World.

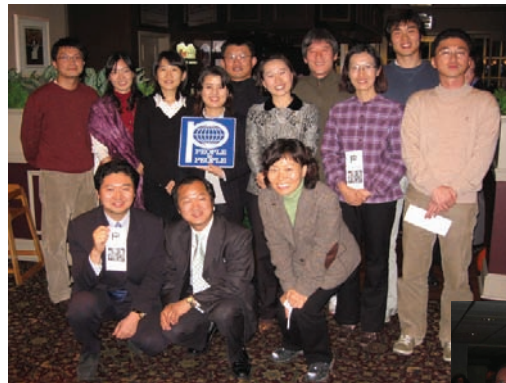
**Check out our awesome website at [www.PTPDE.org](http://www.PTPDE.org)!!** You'll find photos and summaries of past programs, announcements for coming events, and information on becoming a member. We invite you to participate in our efforts to bring "Peace Through Understanding"!

*"[PTPDE] is the best in the USA working on behalf of young people."*

-Keith Currie, Program Director,  
People to People Student Ambassador Program,

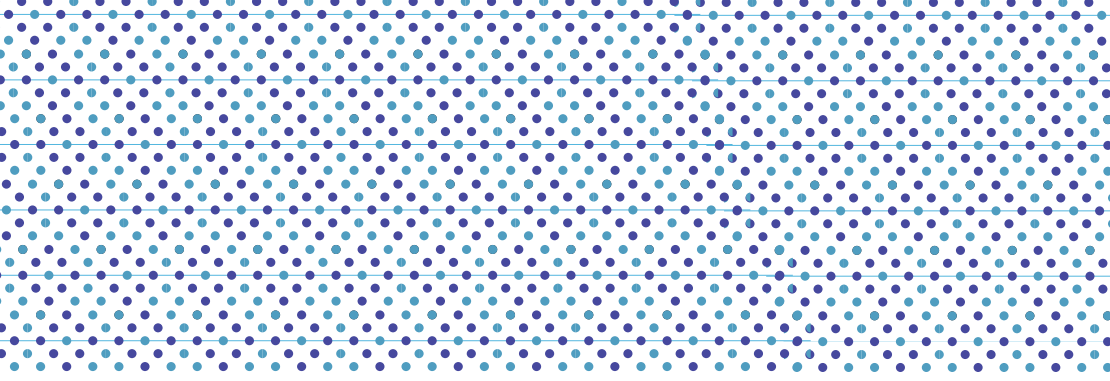
Quite an accomplishment, due largely to the work of Carl Hutter. Thank you, Carl and congratulations!

**Members of PTPDE** enjoy hosting the teachers of English that attend the University of Delaware through grants from the State Department. Teachers from Jordan, Syria, Morocco, Egypt, and Korea remember these People to People interactive dinners!



*Teachers from Korea (above) and Morocco (right) at the English Language Institute at University of Delaware.*





Co-Presidents Georgi Marquisee & Jean Raleigh



### Delaware Chapter of People To People International Membership Application

Are you a .... (circle one)

New Member (s) ?

Renewal Member (s)?

Please indicate your choice of membership: (circle one)

Regular

PaceSetter's Circle

- Individual - \$25.00 per year
- Family (2 adults) - \$45.00 per year
- Student - \$15.00 per year

- Supporter - \$75.00 per year
- Friend - \$100 per year
- Sponsor - \$200 per year
- Patron - \$300 per year
- Benefactor - \$500 per year

PaceSetter includes membership for two adults. Regular and PaceSetter Chapter membership dues are tax exempt (article 501(c)(3)) and include membership in People to People International, a subscription to the Chapter's newsletter, and announcements of all Chapter programs.

Mr/Mrs/Ms: \_\_\_\_\_  
First Initial Last

Mr/Mrs/Ms: \_\_\_\_\_  
First Initial Last

Mailing Address: \_\_\_\_\_  
Street or P.O. Box

\_\_\_\_\_  
City State Zip Code

Telephone: H ( ) \_\_\_\_\_ W ( ) \_\_\_\_\_

Email: \_\_\_\_\_

## Our Mission

People to People International was originally founded by President Dwight D. Eisenhower in 1956 to foster contact, communication, and the exchange of ideas between citizens of the United States and other lands; to improve individual understanding, to bridge international barriers; and to establish a force for friendship to assist mankind in his quest for peace.

Within this broad framework, the Delaware Chapter is committed to the principle of cooperation with groups and organizations of similar orientation whenever possible, and shall initiate chapter programs and projects which will contribute to the respect for the dignity of man and world peace.

design by: baby grand  
babygranddesigns@gmail.com